

Piezo Amplifier Module

For Three Channels, E-500 Piezo Controller System



E-503

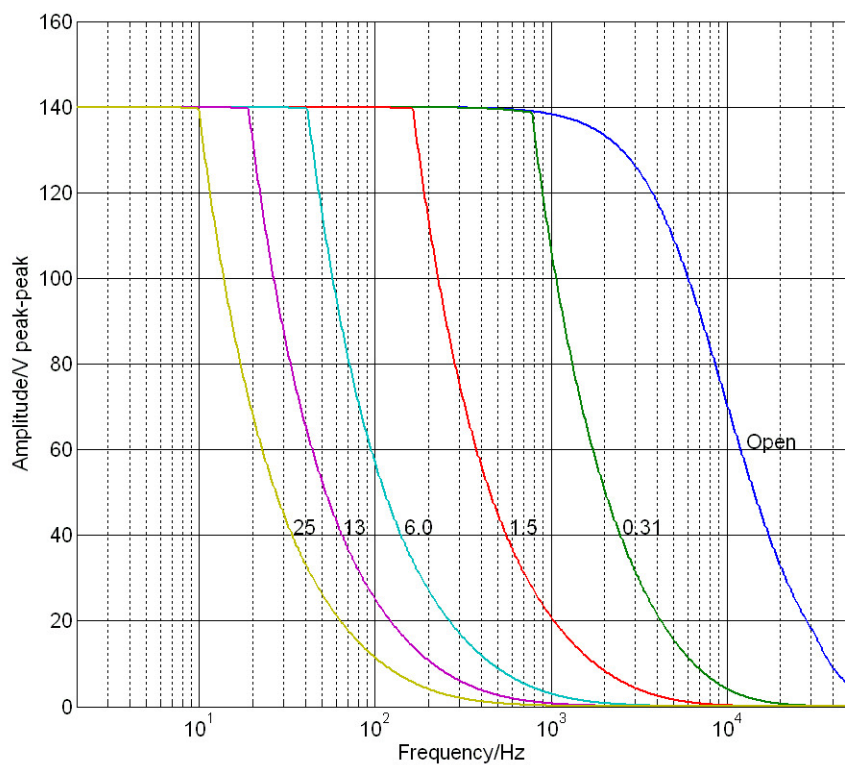
- Plug-in module for E-500 piezo system
- Peak current 3×140 mA
- Output voltage range -30 to 130 V
- Position control (optional)
- Computer interface and display modules

Specifications

	E-503.00 / E-503.00S
Function	Power amplifier
Channels	3 / 2
	E-503.00 / E-503.00S
Amplifier	
Input voltage range	-2 to +12 V
Output voltage	-30 to 130 V (E-503.00S: Additional fixed voltage of 100 V)
Peak current / channel (<5 ms)	140 mA
Average output current / channel (> 5 ms)	40 mA
Current limitation	Short-circuit proof
Voltage gain	10 ± 0.1
Input impedance	100 k Ω / 1 nF
	E-503.00 / E-503.00S
Interfaces and operation	
Piezo connection (voltage socket)	LEMO ERA.00.250.CTL
Analog input / control input socket	BNC
DC offset setting	10-turn potentiometer, adds 0 to 10 V to the input voltage
	E-503.00 / E-503.00S
Miscellaneous	
Operating temperature range	5 to 50 °C
Overheat protection	Deactivation at 85°C
Dimensions	14 HP / 3 RU
Mass	0.9 kg
Operating voltage	E-500 system
Max. power consumption	40 W

Ask about customized versions.

Drawings / Images



E-503: Operating limits (open loop) with various piezo loads, capacitance values in μF

Ordering Information

E-503.00

Piezo amplifier module, 3 channels, -30 to 130 V

E-503.00S

Piezo amplifier module, 2 channels, -30 to 130 V. Customized version, modified for S-330, S-331, S-340 tip/tilt mirror systems, with a fixed voltage of +100 V, two variable voltages