

Piezo Amplifier Module

High Power, E-500 Piezo Controller System



E-505

- Peak current to 10 A
- Output voltage range -30 to 130 V
- Module for E-500 piezo controller rack
- Position control (optional)
- Computer interface and display modules

Specifications

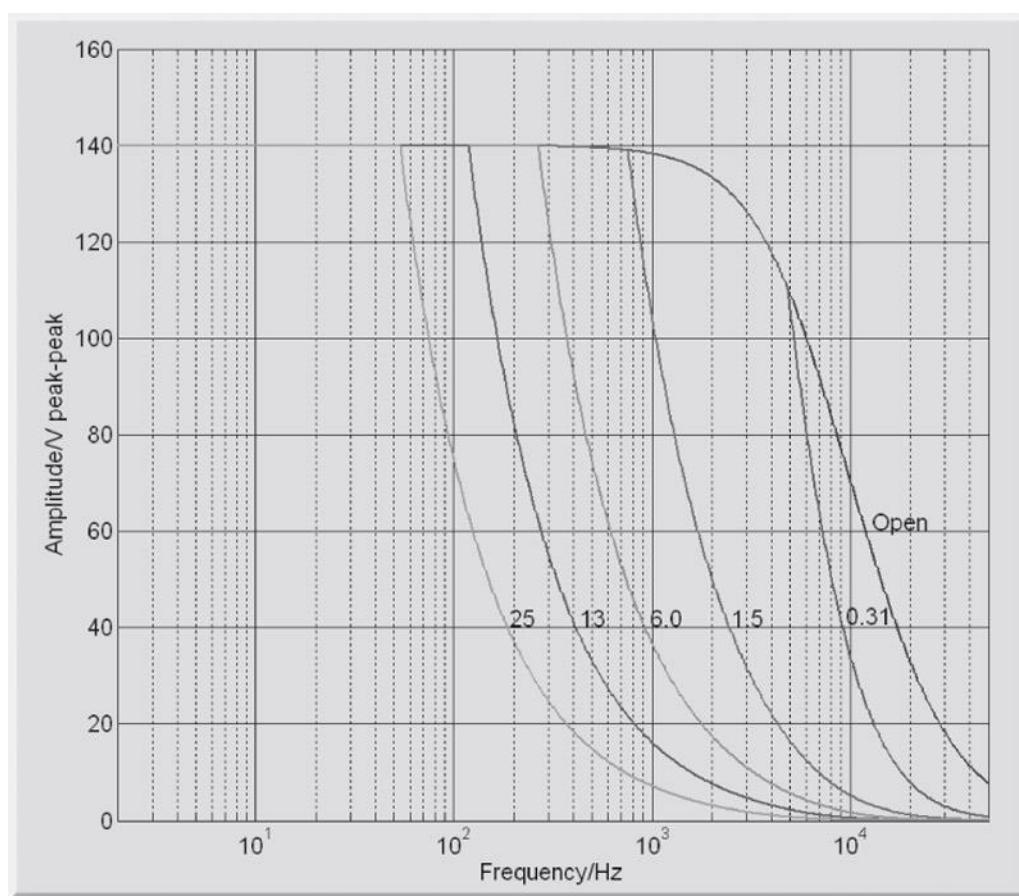
	E-505.00	E-505.10	E-505.00S
Function	Power amplifier	Power amplifier for switching applications*	Offset voltage source for tip/tilt systems
Channels	1	1	1
Amplifier	E-505.00	E-505.10	E-505.00S
Input voltage range	-2 to +12 V	-2 to +12 V	-
Output voltage	-30 to +130 V	-30 to +130 V	100 V
Peak current	2 A (<3 ms)	10 A (<200 μ s)	2 A (<5 ms)
Average output current	215 mA	215 mA	300 mA
Current limitation	Short-circuit proof	Short-circuit proof	Short-circuit proof
Noise, 0 to 100 kHz	<0.6 mVrms	1.0 mVrms	<0.7 mVrms
Voltage gain	10 \pm 0.1	10 \pm 0.1	-
Input impedance	1 M Ω / 1 nF	1 M Ω / 1 nF	-
Interfaces and operation	E-505.00	E-505.10	E-505.00S
Piezo connection socket	LEMO ERA.00.250.CTL	LEMO ERA.00.250.CTL	LEMO ERA.00.250.CTL
Analog input	BNC	BNC	-
DC offset setting	10-turn potentiometer, adds 0 to 10 V to the input voltage	10-turn potentiometer, adds 0 to 10 V to the input voltage	-

Miscellaneous	E-505.00	E-505.10	E-505.00S
Operating temperature range	5 to 50 °C	5 to 50 °C	5 to 50 °C
Overheat protection	Deactivation at 85°C	Deactivation at 85°C	Deactivation at 85°C
Dimensions	14 HP / 3 RU	14 HP / 3 RU	14 HP / 3 RU
Mass	0.9 kg	0.9 kg	0.9 kg
Operating voltage	E-500 system	E-500 system	E-500 system
Max. power consumption	55 W	55 W	55 W

* For piezo actuators with special equipment for high currents

Ask about custom designs!

Drawings / Images



E-505: Operating limits (open loop) with various piezo loads, capacitance values in μF

Ordering Information

E-505.00

Piezo amplifier module, 2 A, -30 to 130 V, 1 channel

E-505.10

Piezo amplifier module for switching applications, 10 A, -30 to 130 V, 1 channel

E-505.00S

Offset voltage source for tip/tilt platforms, 100 V fixed voltage